



**REGIONAL SPECIALISED METEOROLOGICAL CENTRE-TROPICAL CYCLONES, NEW DELHI
TROPICAL CYCLONE ADVISORY**

DEMS-RSMC SPECIAL TROPICAL CYCLONES NEW DELHI DATED 10.06.2023

FROM: RSMC –TROPICAL CYCLONES, NEW DELHI

**TO: STORM WARNING CENTRE, NAYPYI TAW (MYANMAR)
STORM WARNING CENTRE, BANGKOK (THAILAND)
STORM WARNING CENTRE, COLOMBO (SRILANKA)
STORM WARNING CENTRE, DHAKA (BANGLADESH)
STORM WARNING CENTRE, KARACHI (PAKISTAN)
METEOROLOGICAL OFFICE, MALE (MALDIVES)
OMAN METEOROLOGICAL DEPARTMENT, MUSCAT (THROUGH RTH JEDDAH)
YEMEN METEOROLOGICAL SERVICES, REPUBLIC OF YEMEN (THROUGH RTH JEDDAH)
NATIONAL CENTRE FOR METEOROLOGY, UAE (THROUGH RTH JEDDAH)
PRESIDENCY OF METEOROLOGY AND ENVIRONMENT, SAUDI ARABIA (THROUGH RTH JEDDAH)
IRAN METEOROLOGICAL ORGANISATION, (THROUGH RTH JEDDAH)
QATAR METEOROLOGICAL DEPARTMENT (THROUGH RTH JEDDAH)**

TROPICAL CYCLONE ADVISORY NO. 32 FOR NORTH INDIAN OCEAN (THE BAY OF BENGAL AND ARABIAN SEA) VALID FOR NEXT 120 HOURS ISSUED AT 1100 UTC OF 10.06.2023 BASED ON 0900 UTC OF 10.06.2023

SUB: A) VERY SEVERE CYCLONIC STORM “BIPARJOY” (PRONOUNCED AS “BIPORJOY”) OVER EASTCENTRAL ARABIAN SEA AND B) WELL MARKED LOW PRESSURE AREA OVER SOUTHEAST BANGLADESH AND NEIGHBOURHOOD

A) VERY SEVERE CYCLONIC STORM “BIPARJOY” (PRONOUNCED AS “BIPORJOY”) OVER EASTCENTRAL ARABIAN SEA

THE VERY SEVERE CYCLONIC STORM “BIPARJOY” (PRONOUNCED AS “BIPORJOY”) OVER EASTCENTRAL ARABIAN SEA MOVED NEARLY NORTHWARDS WITH A SPEED OF 3 KMPH DURING PAST 6-HOURS AND LAY CENTERED AT 0900 UTC OF TODAY, THE 10TH JUNE, 2023 OVER THE SAME REGION NEAR LATITUDE 16.9°N AND LONGITUDE 67.4°E, ABOUT 700 KM WEST-NORTHWEST OF GOA (43192), 620 KM WEST-SOUTHWEST OF MUMBAI (43057), 580 KM SOUTH-SOUTHWEST OF PORBANDAR (42830) AND 890 KM SOUTH OF KARACHI (41780).

IT IS VERY LIKELY TO INTENSIFY FURTHER INTO AN EXTREMELY SEVERE CYCLONIC STORM DURING NEXT 12 HOURS. IT IS VERY LIKELY TO GRADUALLY MOVE NORTH-NORTHEASTWARDS DURING NEXT 24 HOURS AND THEN NORTH-NORTHWESTWARDS DURING SUBSEQUENT 3 DAYS.

FORECAST TRACK AND INTENSITY ARE GIVEN BELOW:

DATE/TIME(UTC)	POSITION (LAT. °N/ LONG. °E)	MAXIMUM SUSTAINED SURFACE WIND SPEED (KMPH)	CATEGORY OF CYCLONIC DISTURBANCE
10.06.23/0900	16.9/67.4	145-155 Gusting To 170	Very Severe Cyclonic Storm
10.06.23/1200	17.1/67.4	155-165 Gusting To 180	Very Severe Cyclonic Storm
10.06.23/1800	17.5/67.6	165-175 Gusting To 195	Extremely Severe Cyclonic Storm

Cloud distribution: (a) Isolated: <25%, Scattered:25-50%, Broken: 51-75%, Solid:>75%, Convection Intensity: (a) Weak: Cloud Top Temperature (CTT) >-25°C, (b) Moderate: CTT: - 25°C to -40°C, (c) Intense: CTT: - 41°C to -70°C and (d) Very Intense: : Less than -70°C
PROBABILITY OF CYCLOGENESIS (FORMATION OF DEPRESSION): NIL: 0%, LOW: 1-33%, , MODERATE: 34-66% AND HIGH: 67-100%
This is a guidance Bulletin for WMO/ESCAP Panel Member countries. Visit respective National websites for Country specific Bulletins

11.06.23/0000	17.9/67.7	165-175 Gusting To 195	Extremely Severe Cyclonic Storm
11.06.23/0600	18.3/67.7	165-175 Gusting To 195	Extremely Severe Cyclonic Storm
11.06.23/1800	19.1/67.6	155-165 Gusting To 180	Very Severe Cyclonic Storm
12.06.23/0600	19.8/67.5	150-160 Gusting To 175	Very Severe Cyclonic Storm
12.06.23/1800	20.4/67.4	145-155 Gusting To 170	Very Severe Cyclonic Storm
13.06.23/0600	21.0/67.3	135-145 Gusting To 160	Very Severe Cyclonic Storm
13.06.23/1800	21.6/67.1	125-135 Gusting To 150	Very Severe Cyclonic Storm
14.06.23/0600	22.3/66.9	115-125 Gusting To 140	Very Severe Cyclonic Storm
14.06.23/1800	22.9/66.9	105-115 Gusting To 125	Severe Cyclonic Storm
15.06.23/0600	23.5/67.1	95-105 Gusting To 115	Severe Cyclonic Storm

AS PER INSAT 3D IMAGERY INTENSITY OF THE SYSTEM IS T 4.5/4.5. ASSOCIATED BROKEN LOW AND MEDIUM CLOUDS WITH EMBEDDED INTENSE TO VERY INTENSE CONVECTION LAY OVER CENTRAL ARABIAN SEA BETWEEN LATITUDE 13.0°N & 19.0°N AND LONGITUDE 61.5°E & 69.0°E. MINIMUM CLOUD TOP TEMPERATURE IS MINUS 93°C. MULTISAT WINDS INDICATE, STRONGER WINDS IN THE EAST-SOUTHEAST SECTOR.

ASSOCIATED MAXIMUM SUSTAINED WIND SPEED IS 80 KNOTS GUSTING TO 90 KNOTS. THE ESTIMATED CENTRAL PRESSURE IS 972 HPA. SEA CONDITION IS LIKELY TO BE PHENOMENAL OVER EASTCENTRAL AND ADJOINING WESTCENTRAL ARABIAN SEA.

B) WELL MARKED LOW PRESSURE AREA OVER SOUTHEAST BANGLADESH AND NEIGHBOURHOOD

THE WELL MARKED LOW PRESSURE AREA OVER NORTHEAST BAY OF BENGAL AND ADJOINING AREAS OF SOUTHEAST BANGLADESH LAY OVER SOUTHEAST BANGLADESH AND NEIGHBOURHOOD AT 0900 UTC OF TODAY, THE 10TH JUNE, 2023. IT IS LIKELY TO MOVE NEARLY NORTHWARDS AND WEAKEN INTO A LOW PRESSURE AREA DURING NEXT 12 HOURS.

AS PER INSAT 3D IMAGERY, SYSTEM HAS MOVED INLAND AND LAY OVER SOUTHEAST BANGLADESH & NEIGHBOURHOOD. ASSOCIATED SCATTERED TO BROKEN LOW AND MEDIUM CLOUDS WITH EMBEDDED INTENSE TO VERY INTENSE CONVECTION LAY OVER EAST BANGLADESH, MEGHALAYA, SOUTH ASSAM, NAGALAND, MANIPUR, MIZORAM & TRIPURA. MINIMUM CLOUD TOP TEMPERATURE IS MINUS 93°C.

REMARKS:

THE MADDEN JULIAN OSCILLATION (MJO) INDEX IS CURRENTLY IN PHASE 4 WITH AMPLITUDE LESS THAN 1. IT WOULD MOVE ACROSS PHASE 4 DURING NEXT 2 DAYS. THEREAFTER, IT WOULD MOVE ACROSS PHASES 5 AND 6 DURING SUBSEQUENT 3 DAYS. HENCE, MJO IS LIKELY TO SUPPORT THE ENHANCEMENT OF CONVECTIVE ACTIVITY AND CYCLOGENESIS OVER THE BAY OF BENGAL (BOB) DURING THE WEEK1 AND ARABIAN SEA (AS) DURING NEXT 3 DAYS. WESTERLY WINDS (3-5 MPS) ALONG WITH EQUATORIAL ROSSBY WAVES (ERW) ARE LIKELY TO PREVAIL OVER SOUTH AND CENTRAL ARABIAN SEA DURING NEXT 3 DAYS.

(A)ARABIAN SEA:

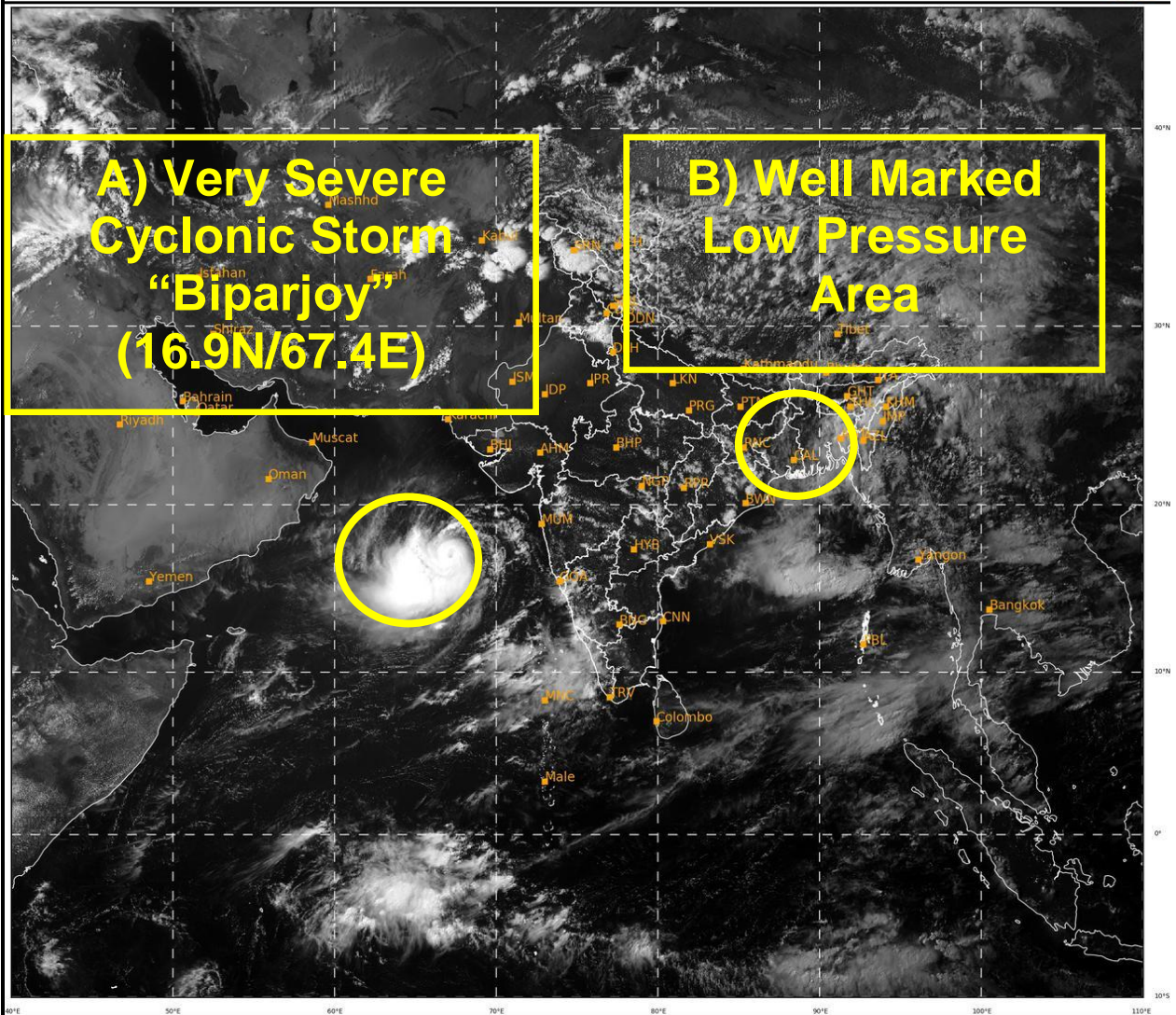
SEA SURFACE TEMPERATURE IS AROUND 30-31°C OVER CENTRAL & ADJOINING SOUTH ARABIAN SEA. THE CYCLONIC STORM "BIPARJOY" IS CURRENTLY IN A VERY FAVOURABLE ENVIROMENT. POSITIVE LOW LEVEL VORTICITY IS AROUND $300 \times 10^{-6} \text{ S}^{-1}$ TO THE SOUTH-SOUTHWEST OF THE SYSTEM CENTRE, LOW LEVEL CONVERGENCE HAS INCREASED AND IS ABOUT $50 \times 10^{-5} \text{ S}^{-1}$ TO THE WEST OF THE SYSTEM CENTRE AND UPPER LEVEL DIVERGENCE IS ABOUT $20 \times 10^{-5} \text{ S}^{-1}$ TO THE SOUTH-SOUTHWEST OF SYSTEM CENTRE. WIND

SHEAR IS MODERATE (15-20 KNOTS) OVER SYSTEM AREA AND IS LOW (10-15 KNOTS) ALONG THE FORECAST TRACK.

LATEST GUIDANCE FROM VARIOUS MODELS INDICATE INTIAL NEAR NORTHWARDS MOVEMENT FOLLOWED BY GRADUAL NORTH-NORTHWESTWARDS MOVEMENT TOWARDS PAKISTAN-SAURASHTRA & KUTCH COASTS. THE LANDFALL POINT IS VARYING BETWEEN LONGITUDE 64°E-69°E ON 16TH.

CONSIDERING ALL THE ABOVE, VERY SEVERE CYCLONIC STORM "BIPARJOY" IS VERY LIKELY TO INTENSIFY FURTHER AND MOVE NORTH-NORTHEASTWARDS GRADUALLY DURING NEXT 24 HOURS. THEREAFTER, IT IS LIKELY TO MOVE GRADUALLY NORTH-NORTHWESTWARDS DURING SUBSEQUENT 3 DAYS.

**M. SHARMA
SCIENTIST-D
RSMC NEW DELHI**



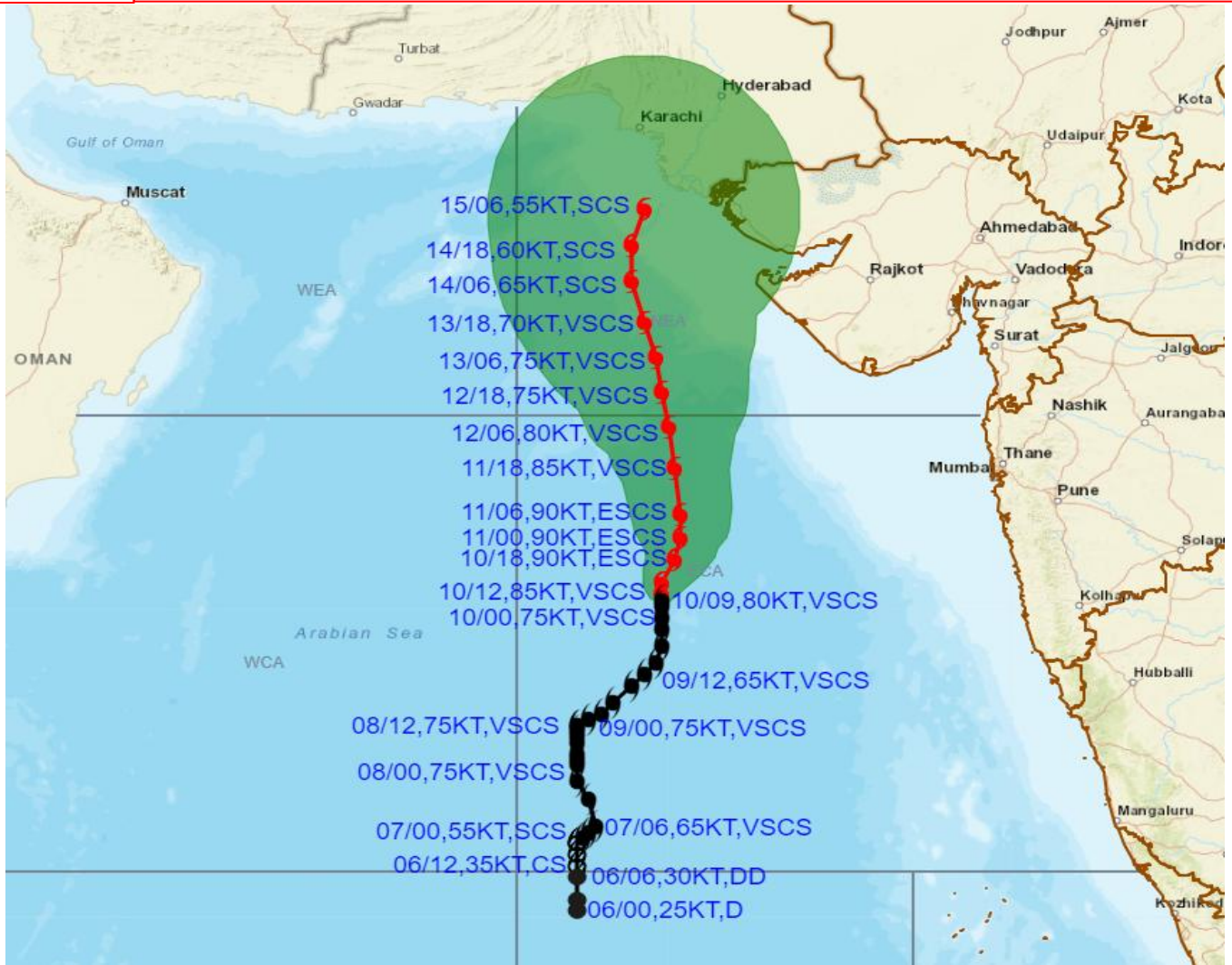
14

459

IMD, DELHI



OBSERVED AND FORECAST TRACK ALONGWITH CONE OF UNCERTAINTY OF VERY SEVERE CYCLONIC STORM "BIPARJOY" OVER EASTCENTRAL ARABIAN SEA BASED ON 0900 UTC (1430 IST) OF 10TH JUNE 2023.



DATE/TIME IN UTC
IST=UTC + 0530

L: LOW PRESSURE AREA

WML: WELL MARKED LOW PRESSURE AREA

D: DEPRESSION (17-27 KT)

DD: DEEP DEPRESSION (28-33 KT)

CS: CYCLONIC STORM (34-47 KT)

SCS: SEVERE CYCLONIC STORM (48-63KT)

VSCS: VERY SEVERE CYCLONIC STORM (64-89 KT)

ESCS: EXTREMELY SEVERE CYCLONIC STORM (90-119 KT)

SuCS: SUPER CYCLONIC STORM (≥ 120 KT)

● LESS THAN 34 KT

○ 34-47 KT

○ ≥ 48 KT

■ OBSERVED TRACK

■ FORECAST TRACK

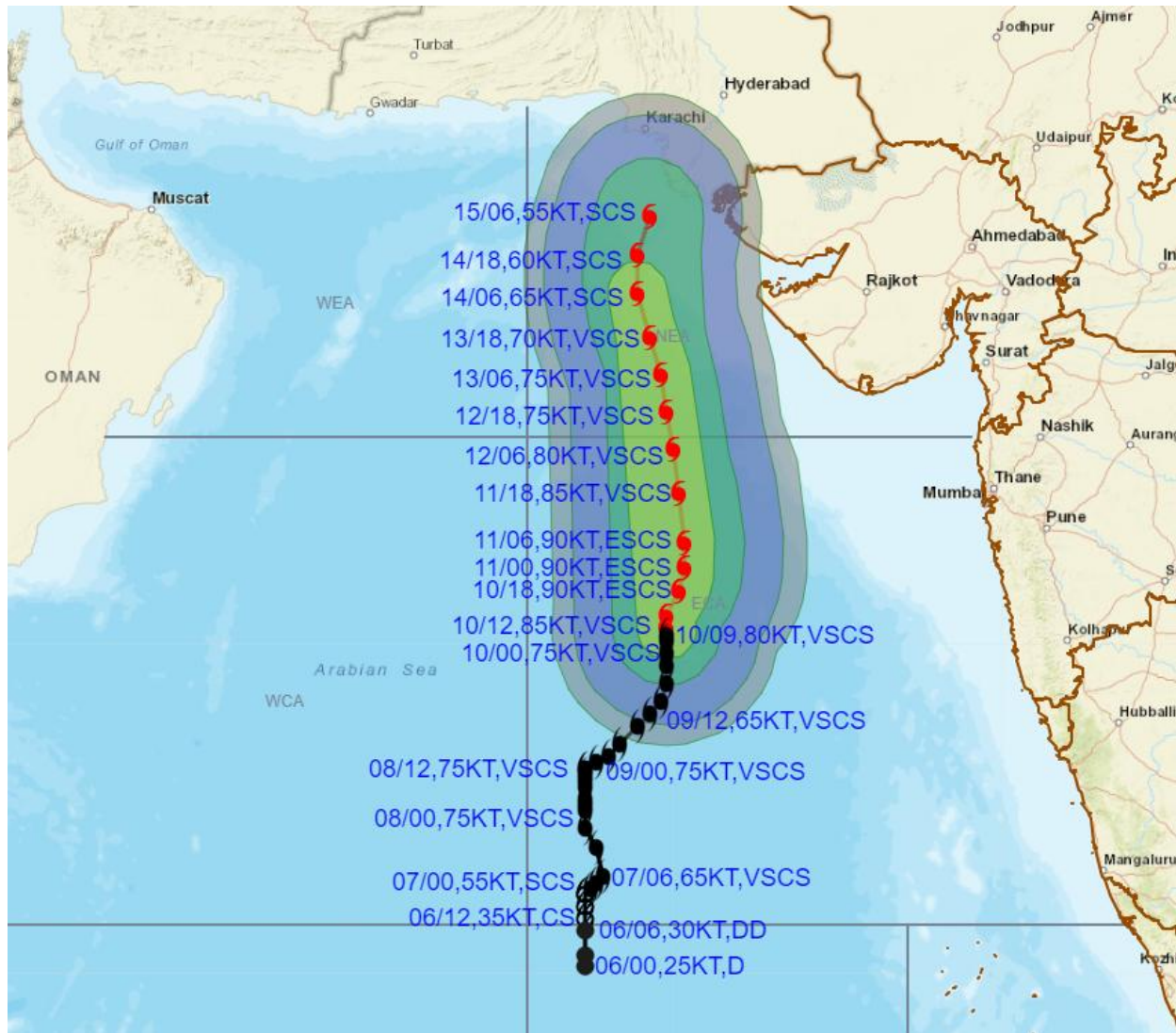
▲ CONE OF UNCERTAINTY

Forecast	DISTANCE(KM) AND DIRECTION FROM STATIONS					
	DATE AND TIME	PORBANDAR	BOMBAY / COLABA	GOA/PANJIM	KARACHI AIRPORT	MASIRAH
	11.06.23/0600	420, SSW	550, W	730, WNW	730, S	960, ESE
	12.06.23/0600	300, SW	570, W	830, NW	560, S	900, E
	13.06.23/0600	260, WSW	630, WNW	930, NW	430, S	870, E
	14.06.23/0600	300, WNW	730, WNW	1060, NW	290, S	850, ENE
	15.06.23/0600	330, NW	780, NW	1130, NW	150, S	900, ENE

Cloud distribution: (a) Isolated: <25%, Scattered:25-50%, Broken: 51-75%, Solid:>75%, Convection Intensity: (a) Weak: Cloud Top Temperature (CTT) >-25°C, (b) Moderate: CTT: - 25°C to -40°C, (c) Intense: CTT: - 41°C to -70°C and (d) Very Intense: : Less than -70°C
PROBABILITY OF CYCLOGENESIS (FORMATION OF DEPRESSION): NIL: 0%, LOW: 1-33%, MODERATE: 34-66% AND HIGH: 67-100%
This is a guidance Bulletin for WMO/ESCAP Panel Member countries. Visit respective National websites for Country specific Bulletins



OBSERVED AND FORECAST TRACK ALONGWITH QUADRANT WIND DISTRIBUTION OF VERY SEVERE CYCLONIC STORM "BIPARJOY" OVER EASTCENTRAL ARABIAN SEA BASED ON 0900 UTC (1430 IST) OF 10TH JUNE 2023.



DATE/TIME IN UTC
 IST=UTC + 0530
 L: LOW PRESSURE AREA
 WML: WELL MARKED LOW PRESSURE AREA
 D: DEPRESSION (17-27 KT)
 DD: DEEP DEPRESSION (28-33 KT)
 CS: CYCLONIC STORM (34-47 KT)
 SCS: SEVERE CYCLONIC STORM (48-63KT)
 VSCS: VERY SEVERE CYCLONIC STORM (64-89 KT)
 ESCS: EXTREMELY SEVERE CYCLONIC STORM (90-119 KT)
 SuCS: SUPER CYCLONIC STORM (≥ 120 KT)

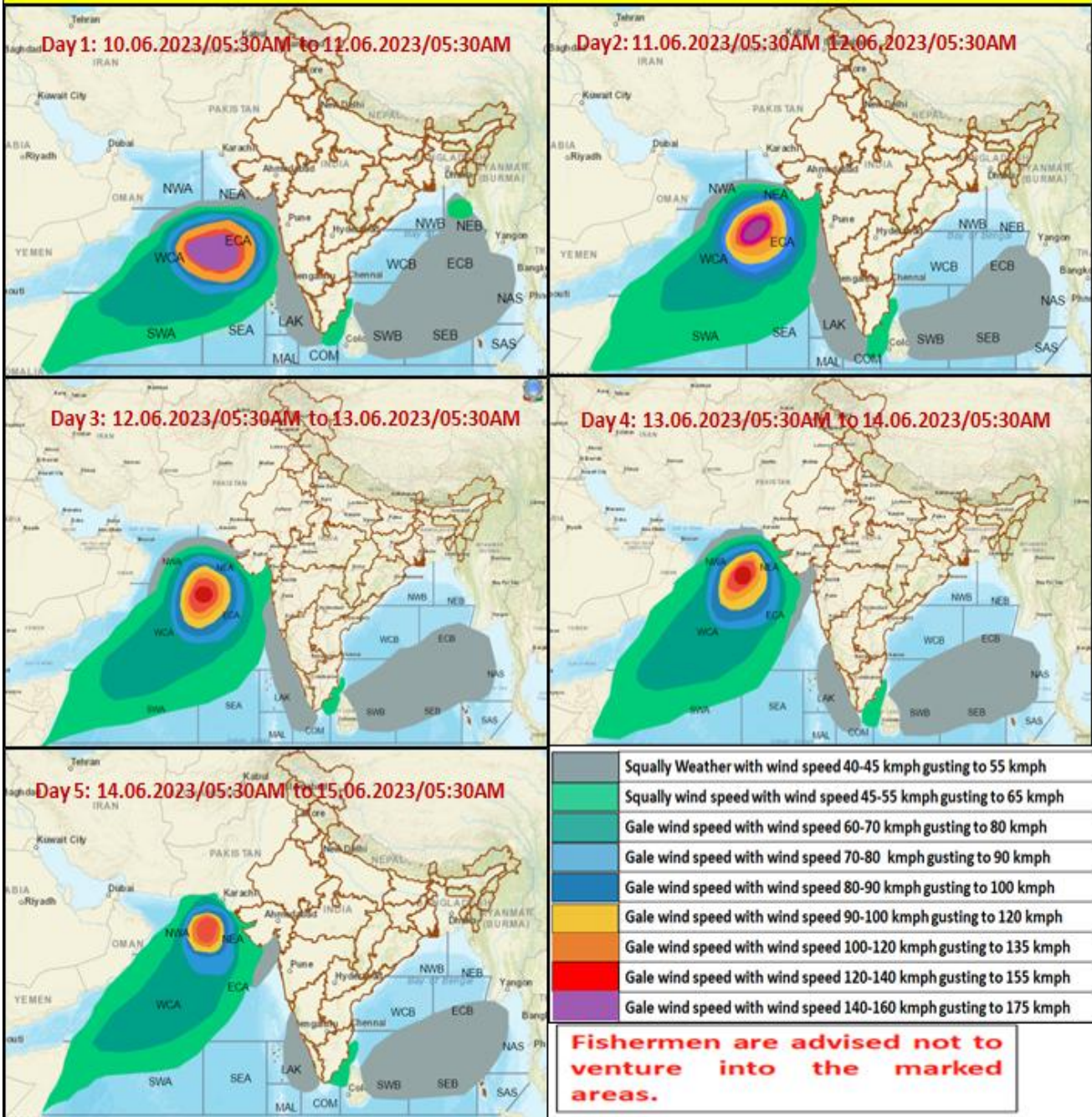
● LESS THAN 34 KT
 ○ 34-47 KT
 ● ≥ 48 KT
 — OBSERVED TRACK
 — FORECAST TRACK
 ■ CONE OF UNCERTAINTY
 ■ AREA OF MAXIMUM SUSTAINED WIND SPEED:
 ■ 28-33 KT (52-61 KMPH)
 ■ 34-49 KT (62-91 KMPH)
 ■ 50-63 KT (92-117 KMPH)
 ■ ≥ 64 KT (≥118 KMPH)

IMPACT OVER THE SEA

MSW (knot/kmph)	Impact	Action
28-33 (52-61)	Very rough seas	Total suspension of fishing operations
34-49 (62-91)	High to very high seas	Total suspension of fishing operations
50-63 (92-117)	Very high seas	Total suspension of fishing operations
≥ 64 (≥118)	Phenomenal	Total suspension of fishing operations

Cloud distribution: (a) Isolated: <25%, Scattered:25-50%, Broken: 51-75%, Solid:>75%, Convection Intensity: (a) Weak: Cloud Top Temperature (CTT) >-25°C, (b) Moderate: CTT: - 25°C to -40°C, (c) Intense: CTT: - 41°C to -70°C and (d) Very Intense: : Less than -70°C
 PROBABILITY OF CYCLOGENESIS (FORMATION OF DEPRESSION): NIL: 0%, LOW: 1-33%, , MODERATE: 34-66% AND HIGH: 67-100%
 This is a guidance Bulletin for WMO/ESCAP Panel Member countries. Visit respective National websites for Country specific Bulletins

Fishermen warning graphics



Cloud distribution: (a) Isolated: <25%, Scattered:25-50%, Broken: 51-75%, Solid:>75%, Convection Intensity: (a) Weak: Cloud Top Temperature (CTT) >-25°C, (b) Moderate: CTT: - 25°C to -40°C, (c) Intense: CTT: - 41°C to -70°C and (d) Very Intense: : Less than -70°C
PROBABILITY OF CYCLOGENESIS (FORMATION OF DEPRESSION): NIL: 0%, LOW: 1-33%, , MODERATE: 34-66% AND HIGH: 67-100%
 This is a guidance Bulletin for WMO/ESCAP Panel Member countries. Visit respective National websites for Country specific Bulletins